

Huntley Street

Enhanced supported
living for individuals
with complex needs

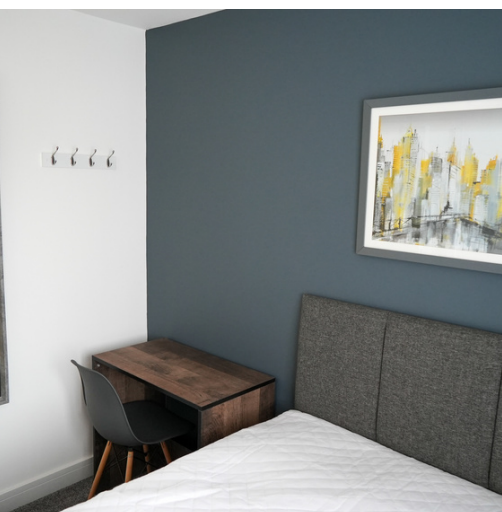


Supporting people with complex needs in their journey to independence

Our enhanced supported living service at Huntley Street provides short-term support for individuals who are eligible under the Care Act and considered hard to house.

The individuals must have a mental health diagnosis, and may have previously been supported by probation services, drug and alcohol services or homelessness services.

Within the Warrington community we provide a wrap-around, bespoke support service that empowers individuals to access a range of opportunities, with the aim to move into their own home living independently in the community.





The environment

Huntley Street is a bright, contemporary home designed to create a comfortable and safe environment for residents.

The property has six bedrooms with ensuite bathrooms, with five for people supported and one for staff use and a quiet place for reflection.

It is within walking distance of the bus route and local amenities.

We aim to...



- Create a positive risk-taking approach
- Maintain a therapeutic environment
- Deliver the 'Just Enough Support' Model
- Offer people access to a safe environment (sometimes for the first time)
- Be an enabler for people to reach their potential and achieve their outcomes
- Increase resilience and confidence to enhance someone's chances of success
- Develop a sense of belonging and citizenship

Our team

Our team are committed and experienced in delivering person-centred and outcome focused care.

The team show compassion and empathy when working with people who have previously offended. We do not judge and look to the future.

The team provide a culture of openness, trust and transparency. People supported are offered 1-1 sessions to review progress and voice their opinions.



Our model

Huntley Street was created in partnership with the local authority commissioning team, the registered provider, local mental health teams, drug and alcohol teams, the police and the community.

We focus on how we can work together to get the person supported back on track following any incidents or relapses in their programmes.

We work to develop a trusting relationship and empower the person supported to develop coping strategies and prevent a recurring pattern, reducing the impact on essential services.

We provide a personalised alternative to traditional hostel/hard to house model offered by community teams.



Delivery



The registered housing provider offers a license model, as opposed to an assured tenancy and provides a concierge for night cover, the cost of which is claimed back through Housing Benefit.

The concierge wears a body camera to ensure people are not at risk of harm from local drug gangs or from hate crime.

Commissioners remain close to the service and form part of the response with all interested parties where needed.


Referrals

We accept referrals from various routes ranging from local mental health professionals, commissioning teams, prison officials and street homeless support.

If someone is recalled to prison we maintain contact by visiting on the healthcare wing, which maintains the relationship and provides a critical support line.

We carry out assessments flexibly for referrals which include when a person is in prison awaiting their release date.

This proactive approach avoids homelessness for some of the most vulnerable people in society.



How we add value

Outcome-focused mental health support



We support people to take their medication and work closely with mental health services, local organisations and the individual's multidisciplinary team to ensure we step up or step down support, and provide referrals to appropriate services as and when required.

Enhanced support



We provide people with life skills about basic life skills, sustaining a home, how to manage a future tenancy, citizenship its responsibilities and accountabilities money management reducing the risk of self-neglect, looking after their own physical health as well as their mental health.

Safety



The property has a concierge service for waking night support, providing an extra level of safety. This is funded through housing benefit and the housing provider oversee the cost for this service.

Drug and alcohol support



We work closely with individuals to keep them engaged with their programmes and get advice and support where needed, increasing the likelihood of a successful withdrawal or abstinence from drugs and alcohol.

Probation services



We work closely with both probation and prison services, completing assessments from inside the prison, and reinforcing any requirements set out as part of community orders. We also accept people on a tag with curfews and support individuals to stay within those guidelines.



Key contacts



Kirsty Dovaston

Team Leader,
Alternative Futures Group



Kirsty.Dovaston@afgroup.org.uk



07824096020



Emma Worrall

Head of Operations for Mental Health,
Alternative Futures Group



Emma.Worrall@afgroup.org.uk



07824096084

Alternative Futures Group

